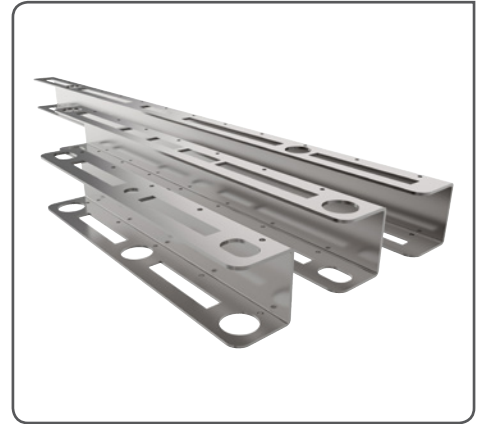


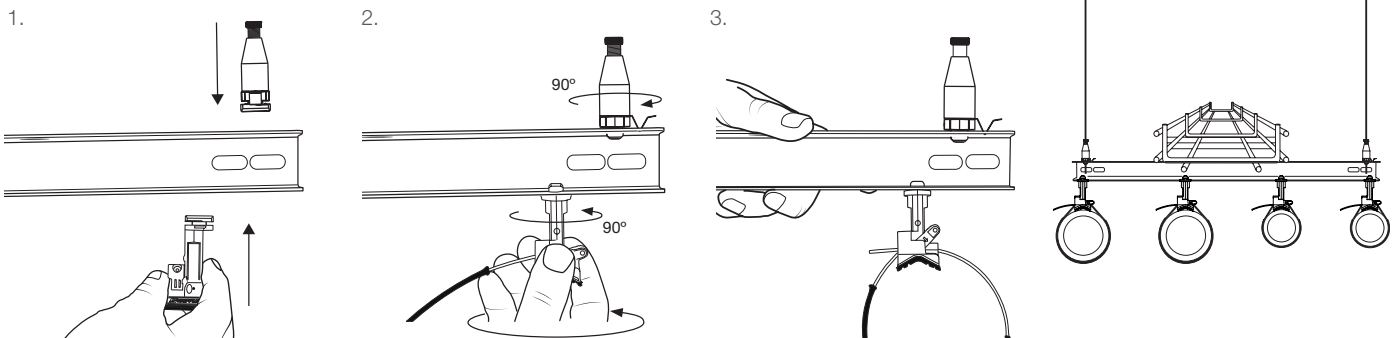
Universal Brackets are designed for quick and easy support of electrical containment, pipework and other mechanical services.

FEATURES / BENEFITS

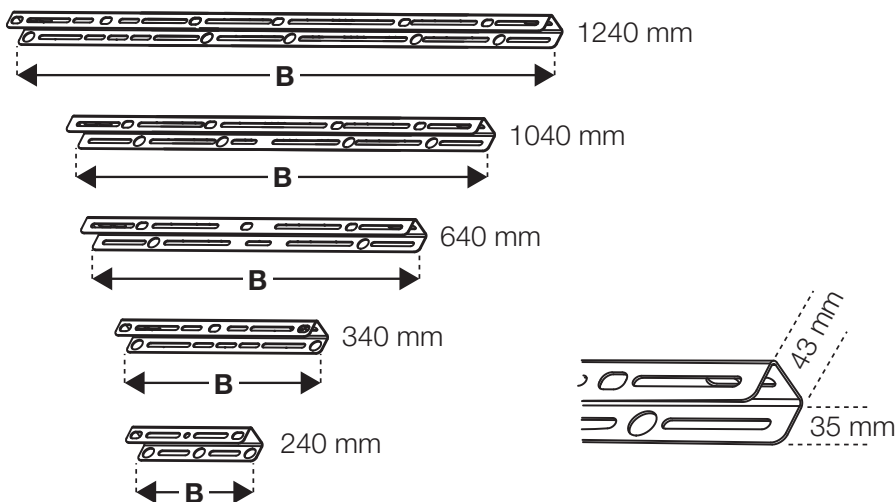
- Pre-cut - eliminates the need for cutting channel on site
- Ideal for use with QT clamps for fast suspension of pipework
- Ideal for use with QT Trapeze Plus for the fastest suspension of electrical containment
- Versatile - Can be bolted directly to soffit or wall, or suspended from the soffit using threaded rod or Gripple wire suspension kits e.g. QT Trapeze Plus
- Saves labour time - Eliminates the need for cutting channel on site, allowing more productive use of labour
- Improves health and safety - No tools or "Hot Works" permit required for installation



INSTALLATION



SPECIFICATION



SUSPENSION METHODS



QT Trapeze Plus

Trapeze

Threaded Rod

For more information on suspension methods contact us or visit www.gripple.com

SUBMITTAL INFORMATION

Load Rating:
150 kg

Material:
BS EN 10346:2009 DX51D (Mild Steel)

Approvals:
Lloyds certified
Load tested by Element
Fire tested by BRE

