

# Fire Rated Trapeze Plus Hanger

**POLYPLAS**  
INTERNATIONAL

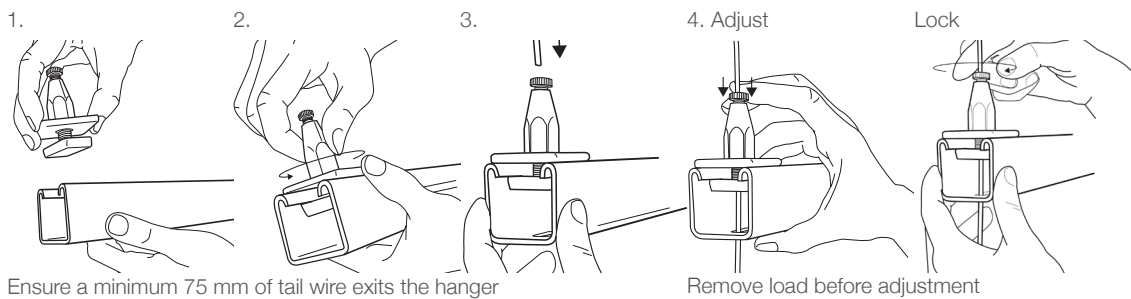
All steel Trapeze Plus with galvanised wire rope is packed with new features to make the suspension of building services even more secure and durable

## FEATURES & BENEFITS

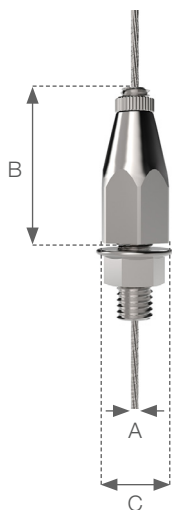
- Reduced time working at height
- Tool free setting
- Easy-to-use integral release button to allow fine adjustment
- Tighten the locking screw for ultimate security
- Channel can be multi-tiered to optimise space
- Supplied as a ready-to-use kit with a wide range of end fixings



## INSTALLATION & ADJUSTMENT



## SPECIFICATION & DIMENSIONS



Dimension	MTZ6
A	6 mm
B	60 mm
C	27 mm

## AVAILABLE END FIXINGS



More information can be found at  
[www.grippleaustralia.com.au](http://www.grippleaustralia.com.au)

## PRODUCT INFORMATION

**Safe Working Load:**  
No.6 wire - 270 kg with a 5:1 safety factor

**Material:**  
**Carriage** - Mild Steel (Type EN1A) - Bright Zinc Plated  
**Balls** - Grade 40 Chrome Steel  
**Spring** - Stainless Steel (Type 302)  
**Locking nut** - (knurled) Mild Steel (Type EN1A) - Bright Zinc Plated  
**Threaded Adaptor** - Mild Steel (Type EN1A) - Bright Zinc Plated  
**Housing** - Mild Steel (Type EN1A) - Bright Zinc Plated  
**Nut** - Mild Steel (Type EN1A) - Bright Zinc Plated

GA-PI-MTZ6

[www.grippleaustralia.com.au](http://www.grippleaustralia.com.au)

Polyplas International are continuously working to develop and improve our product range. We reserve the right to change specifications, etc. without notice.



Polyplas International, 3 Corporate Avenue, Rowville, VIC 3178  
Tel: 03 9754 0333 Fax: 03 9755 6071 Email: [info@gripple.net.au](mailto:info@gripple.net.au)