

Fast Trak Range



Product Description:

Prefabricated, trapeze bracket solution offering speed, flexibility and efficient use of space, for the installation of electrical containment, pipework, ductwork and other mechanical services in restricted places.

Product Benefits/Key points:

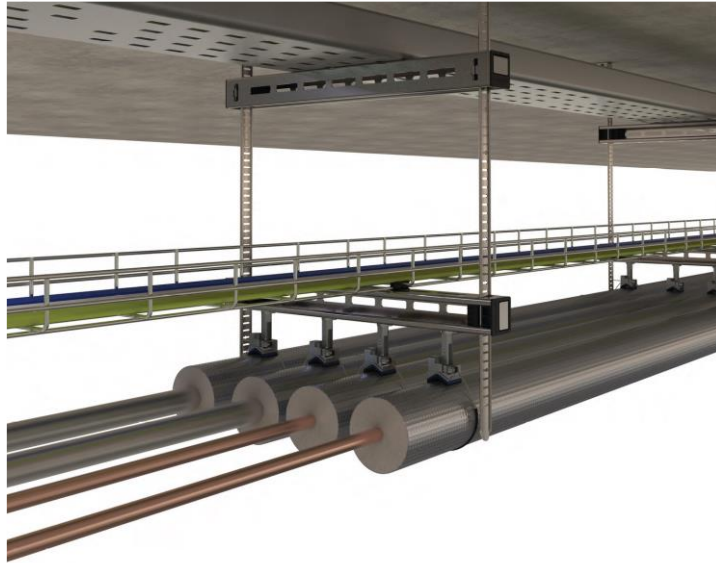
- Quick – up to six times faster to install than traditional suspension systems
- Safe – pre-fabricated system which removes the need to cut threaded rod or channel on site
- Tool free – bracket can be moved up and down the tracks to accommodate changes in position during installation
- Secure – safety locks ensure security once brackets & tracks are in place
- Zero waste – tracks bend neatly under bracket
- Space saver – can be multi-tiered to accommodate additional services
- Easy measurement – indicators at each end of the bracket can be used as a measurement guide when marking fixing points in the soffit
- Neat & tidy – system can be 'stacked' on-site to reduce storage

Product Loads/Capacity:

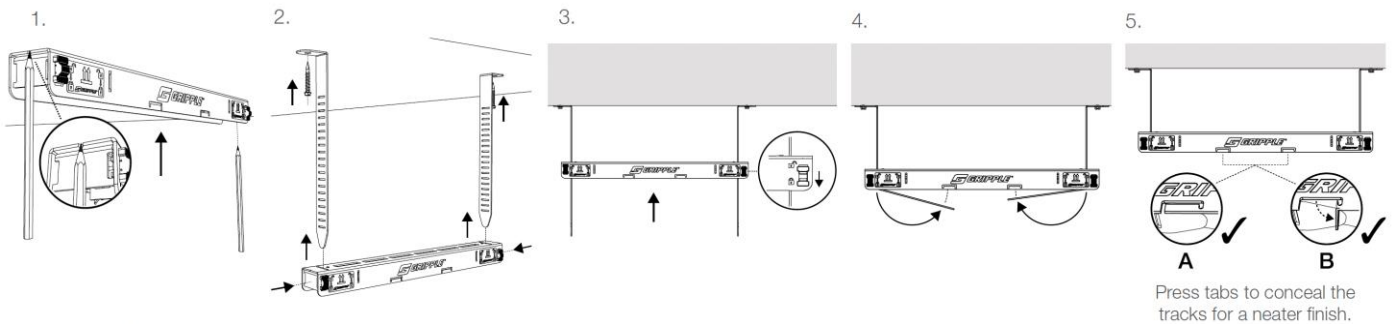
- Safe Working Load: See table in specification
- Material: BS EN 10346:2009 DX51D (Mild Steel), Button – Polypropylene, Impact Copolymer
- Approvals: Lloyds certified
- Load tested by Element
- Fire tested by BRE
- TUV tested
- APAVE tested



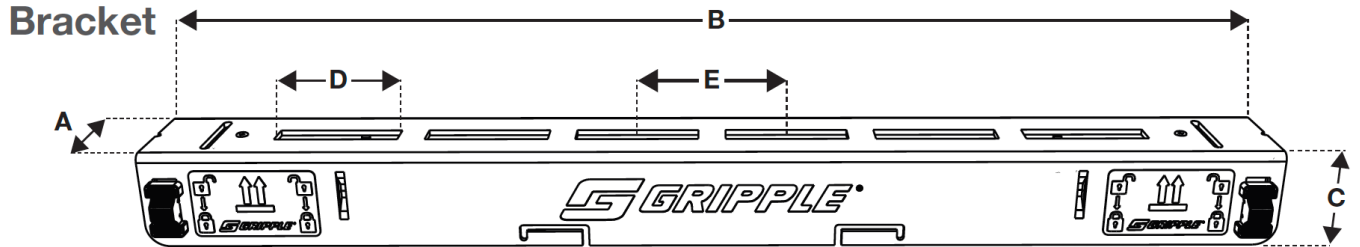
Application Example:



Installation:



Specification and Dimensions:



Bracket	A(mm)	B(mm)	C(mm)	D(mm)	E(mm)	Distance Between Tracks(mm)	Max Single Load Point (kg)	Max Uniform Load (UDL)
FTB270	44	270	35	45	55	270	90	180kg (3:1)
FTB370	44	370	35	45	55	370	90	180kg (3:1)
FTB570	44	570	35	45	55	570	90	180kg (3:1)
FTB670	44	670	35	45	55	670	90	180kg (3:1)
FTB870	44	870	35	45	55	870	90	180kg (3:1)
FTB1170	44	1170	35	45	55	1170	90	180kg (3:1)
FTB1470	44	1470	35	45	55	1470	90	180kg (3:1)



Track	A(mm)	B(mm)	C(mm)	D(mm)	E(mm)	F(mm)	Safe Working Load (per track)
200	40	200	28	10.1	24	10	90kg (5:1)
300	40	300	28	10.1	24	10	90kg (5:1)
500	40	500	28	10.1	24	10	90kg (5:1)
800	40	800	28	10.1	24	10	90kg (5:1)
1000	40	1000	28	10.1	24	10	90kg (5:1)
1500	40	1500	28	10.1	24	10	90kg (5:1)

